

ICOM INSTRUCTIONS

PROGRAMMING SOFTWARE

CS-F2100D(NXDN)

Thank you for choosing this Icom product. **READ ALL INSTRUCTIONS** carefully and completely before using this product.

■ System requirements

PC with an OS and specifications, and the cable, listed below are required to use the CS-F2100D (NXDN).

Operating System (OS)

- Microsoft® Windows® 10 (32/64 bit)
- Microsoft® Windows® 8.1 (32/64 bit)*
- *Except for the "RT" version.
- Microsoft® Windows® 7 (32/64 bit)

Others

- OPC-478UC PROGRAMMING CABLE (purchase separately)
- A USB 1.1 or 2.0 port
- A CD drive

■ Software installation

When installing the software, confirm Windows has completed its startup, and then log in as the **administrator**.

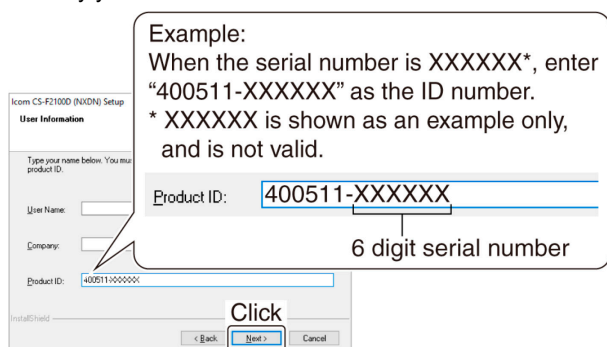
1. Confirm no other applications are running.
2. Insert the CD into a CD drive.
3. Double-click "setup.exe" in the "CSF2100D (NXDN)" folder on the CD.

- If "User Account Control" is displayed, click <Yes> to continue.

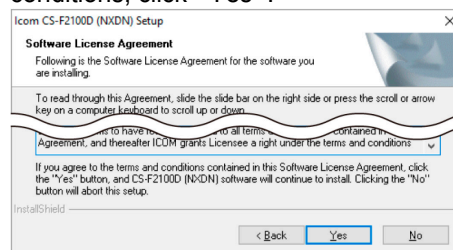
4. "Welcome to the InstallShield Wizard for CS-F2100D (NXDN)" is displayed. Click <Next>.



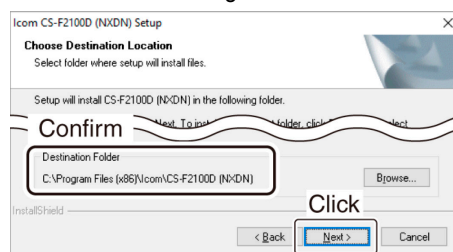
5. "User Information" is displayed. Enter your name (option), your company name (option), and the product ID number as described below. Click <Next >.
- Product ID number: 400511-(6 digit serial number)
- The serial number is on the CD.
- If you downloaded the software, enter the ID provided by your distributor.



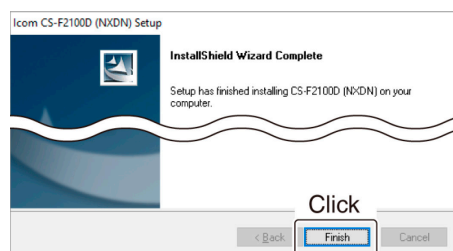
6. "License Agreement" is displayed. Read carefully, and if you agree to the terms and conditions, click <Yes>.



7. "Choose Destination Location" is displayed. Click <Next >.
- If desired, click <Browse...> to select another destination folder before clicking <Next >.



8. After the installation has completed, "InstallShield Wizard Complete" is displayed. Click <Finish>.



9. Eject the CD.
10. A 'CS-F2100D (NXDN)' group is created on the menu, and a shortcut icon is created on the desktop.

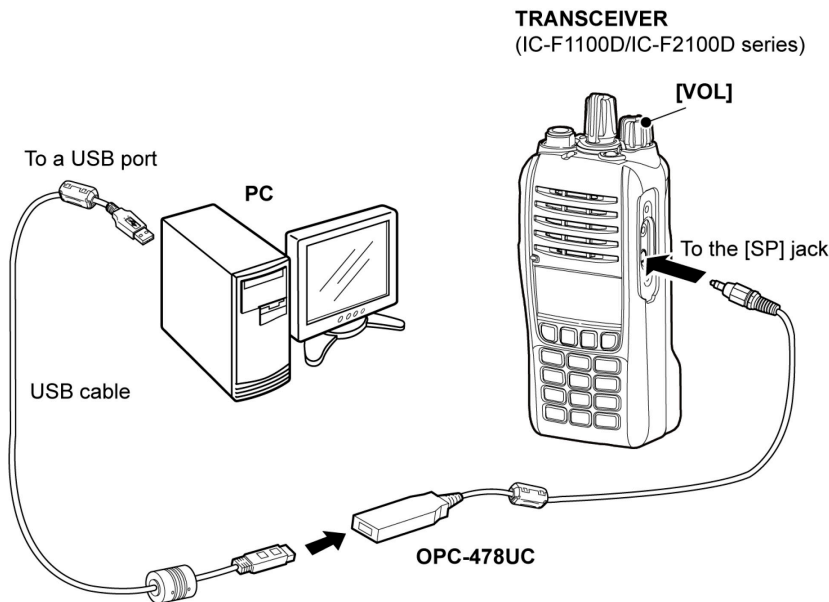
NOTE: You can uninstall the software using the "Uninstall a program" in the Windows Control Panel.

■ Before connecting the OPC-478UC to the PC

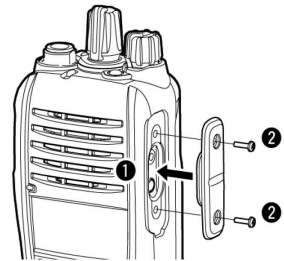
To use the OPC-478UC PROGRAMMING CABLE, you must first install a USB driver.
The driver and installation guide are supplied with the programming cable.
Read the guide carefully before installing the driver.

■ Connection

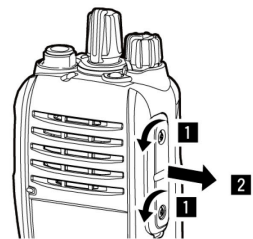
1. Be sure the transceiver is OFF, and Windows has completed its startup.
2. Connect the cable, as shown below.
3. Turn ON the transceiver.



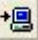
Attaching:
Attach the jack cover (1), then tighten the screws (2).



Detaching:
Remove the screws (1), then detach the jack cover. (2).



■ Reading and entering data

- To prevent data loss, read all the transceiver's data before entering or editing parameters by using the software, even if the transceiver is factory fresh.
Click , or <Program> in the top menu of the software, and then select "Read ← TR" to start reading.
- While reading or writing entered data, **NEVER** turn OFF the transceiver or the PC, and **NEVER** disconnect the cable. Otherwise, the data could be lost or corrupted.
- Before reading or entering data, make a backup file on your PC.
A backup file enables you to easily restore if the data in the transceiver is accidentally deleted.

TIP: Refer to the software's Help file for assistance with the functions or settings.
To open the Help file, click <Help> in the top menu of the software and select "Contents," or simply push the [F1] key on the PC's keyboard.

Icom, Icom Inc. and Icom logo are registered trademarks of Icom Incorporated (Japan) in Japan, the United States, the United Kingdom, Germany, France, Spain, Russia, Australia, New Zealand, and/or other countries.

Microsoft, Windows are registered trademarks of Microsoft Corporation in the United States and/or other countries.

All other products or brands are registered trademarks or trademarks of their respective holders.